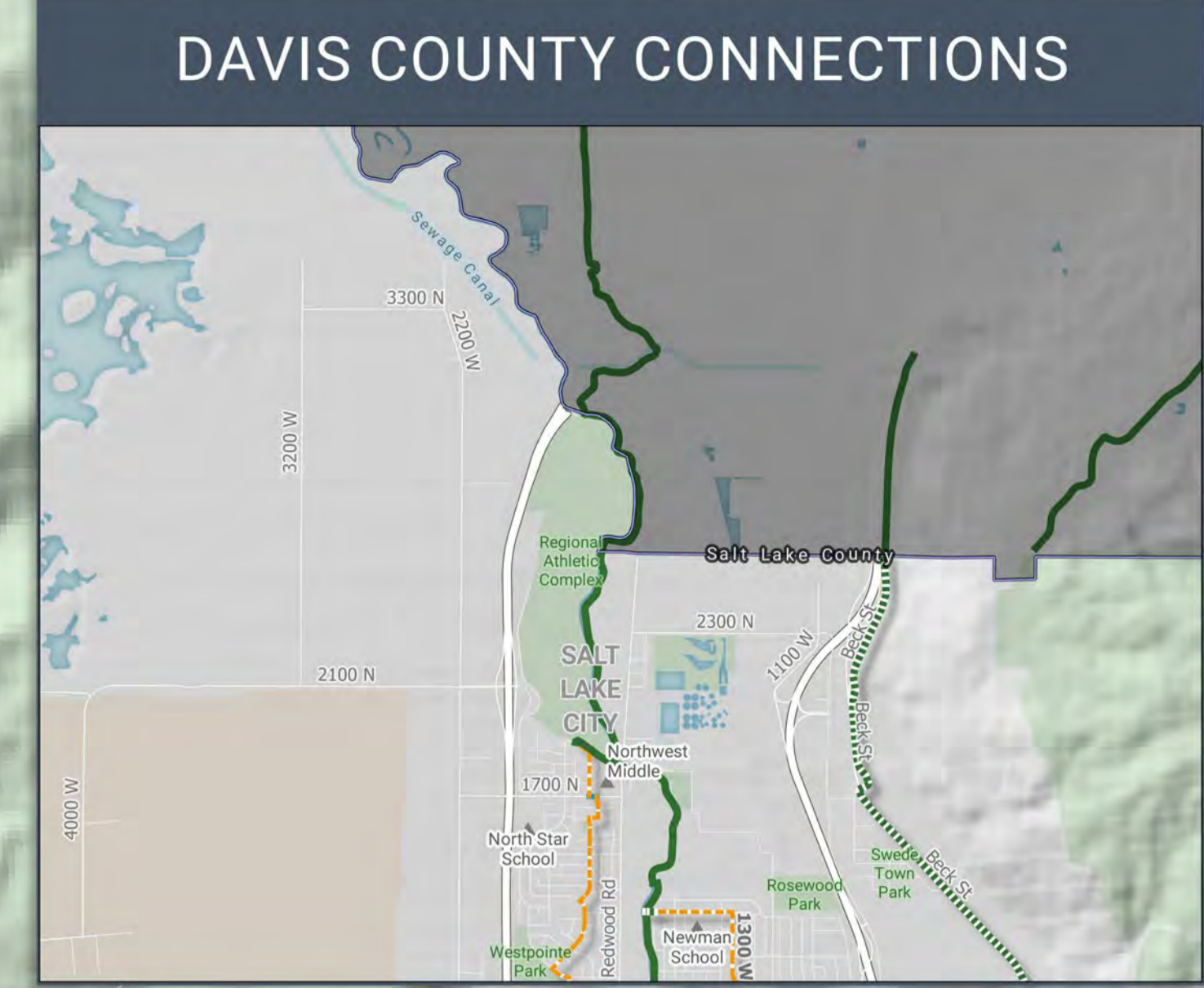
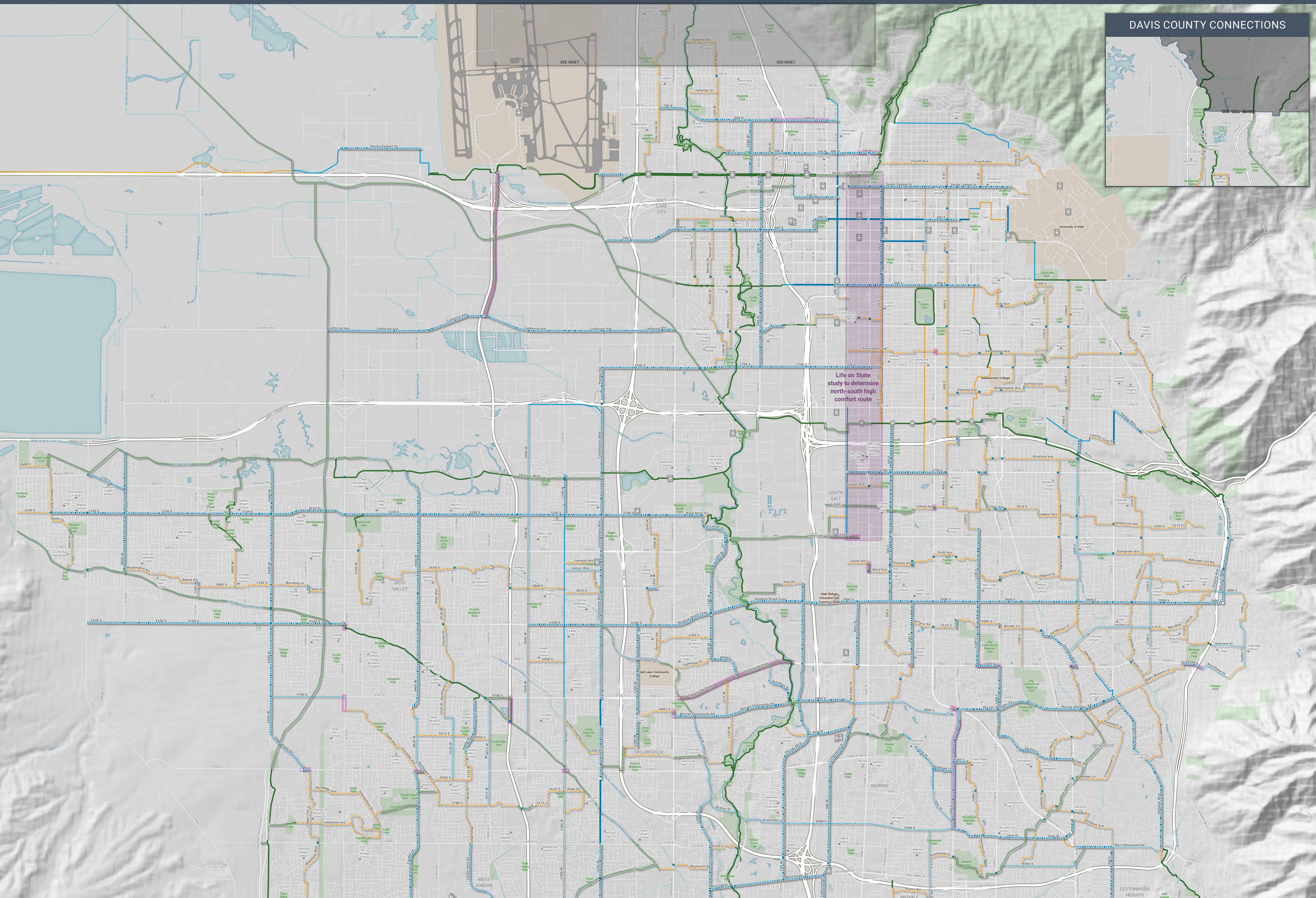


**Recommendations Legend:**

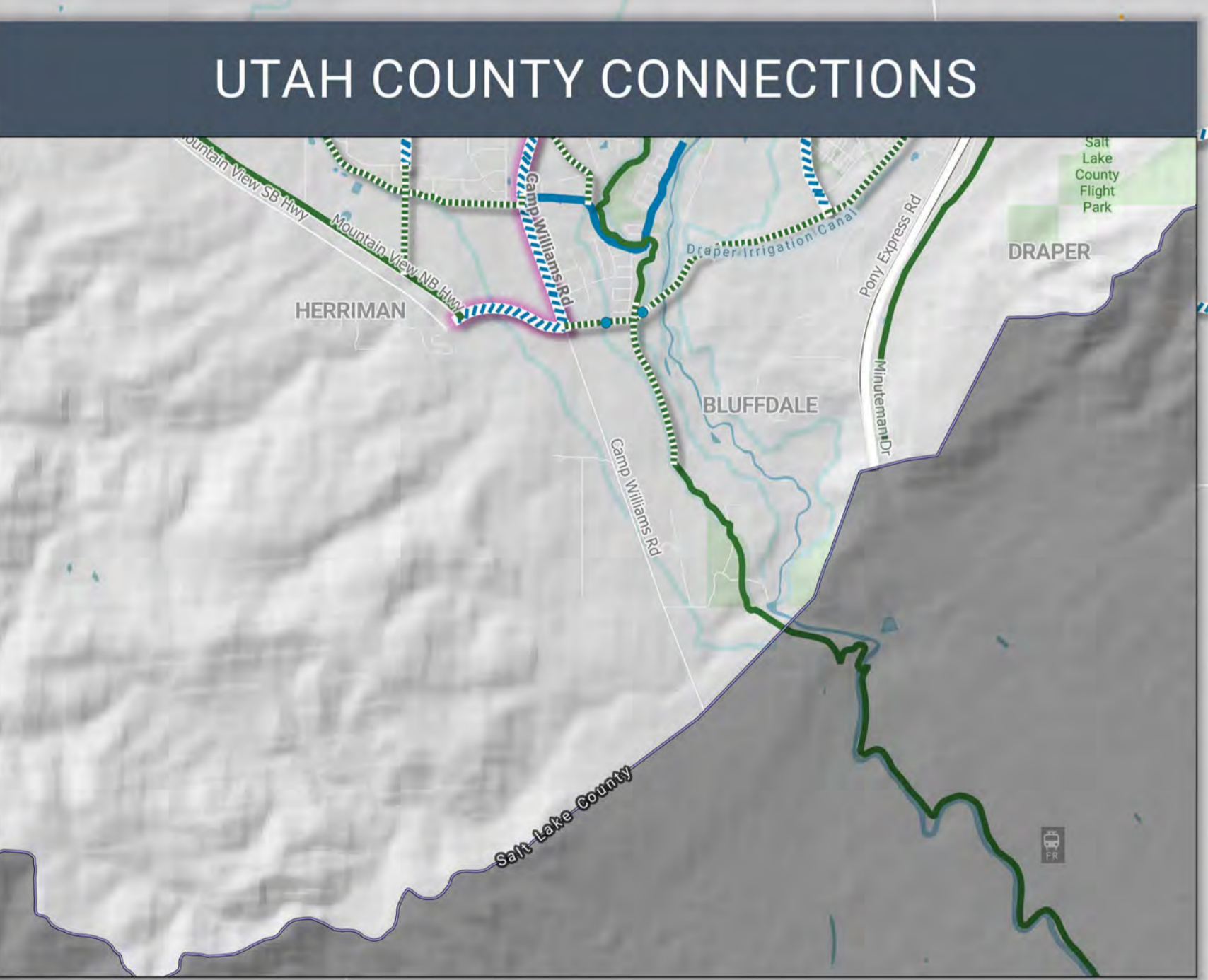
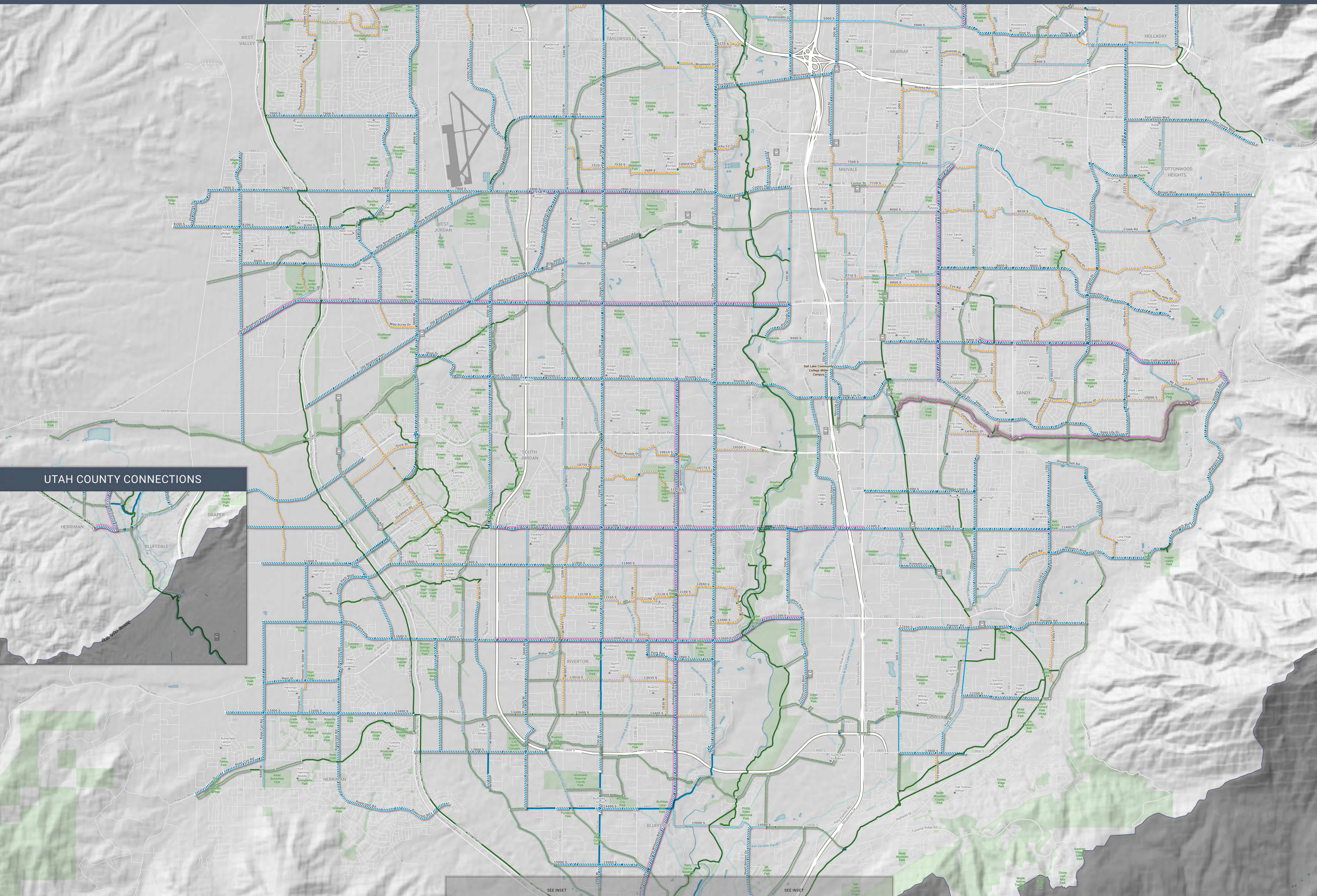
- Existing: Solid green line
- Multi-use path: Dashed green line
- Side path: Dashed blue line
- Buffered or protected bike: Dashed blue line with green border
- Bike lane (lower stress): Dashed blue line with blue border
- Neighborhood byway: Dashed orange line
- Spot improvements: Blue circle
- Further study needed: Purple shaded area

This map displays recommendations for a county-wide high comfort bicycle network intended to attract a broad spectrum of bicyclists, including those that are less confident riding in close proximity to motor vehicles traveling at higher speeds. High comfort bicycle facilities provide dedicated space and additional separation between bicyclists and motor vehicles on roads with higher vehicle speeds and volumes, or traffic calming on neighborhood streets that are shared by bicyclists and motor vehicles. High comfort bicycle routes also provide safe and convenient crossings of busy roads. For more information and guidance on what constitutes a high comfort bicycle facility refer to Salt Lake County's Bicycle Best Practices: Bikeway Design.



	Recomm. needed		Further study needed
	Multi-use path		
	Side path		
	Buffered or protected bike		
	Bike lane (lower stress)		
	Neighborhood byway		
	Spot improvements		

This map displays recommendations for a county-wide high comfort bicycle network intended to attract a broad spectrum of bicyclists, including those that are less confident riding in close proximity to motor vehicles traveling at higher speeds. High comfort bicycle facilities provide dedicated space and additional separation between bicyclists and motor vehicles on roads with higher vehicle speeds and volumes, or traffic calming on neighborhood streets that are shared by bicyclists and motor vehicles. High comfort bicycle routes also provide safe and convenient crossings of busy roads. For more information and guidance on what constitutes a high comfort bicycle facility refer to Salt Lake County's Bicycle Best Practices: Bikeway Design.



SEE INSET

SEE INSET