

Salt Lake County West General Plan

Municipal Stakeholder Meeting

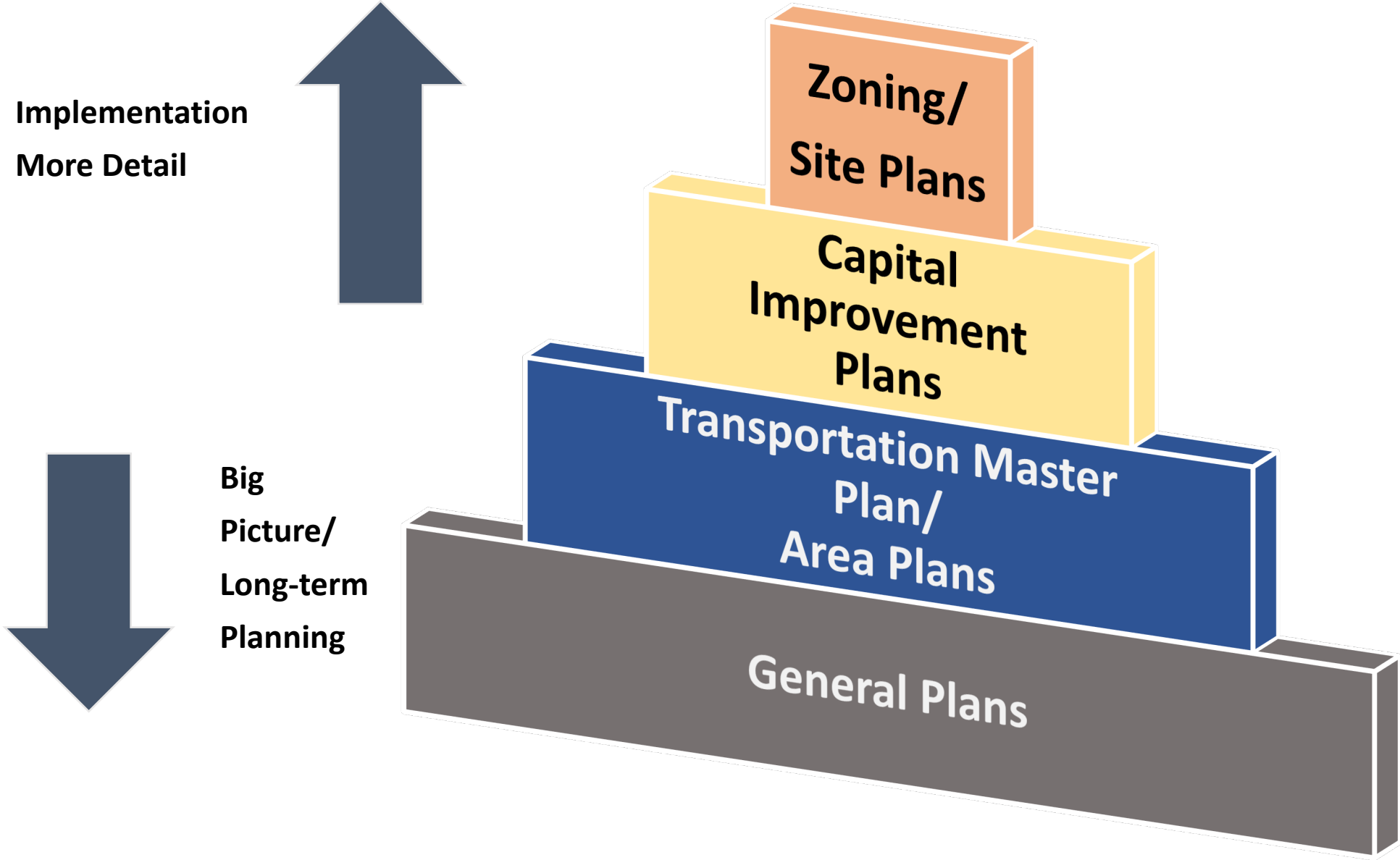
April 2021

Ryan Perry, Planning & Transportation Division Director
Jake Young, Planning Program Manager
Helen Peters, Transportation Program Manager
Thomas McMurty, Transportation Consultant
Brian Wilkinson, Communication Consultant
Jordan Carroll, Communication Manager

What is a General Plan?

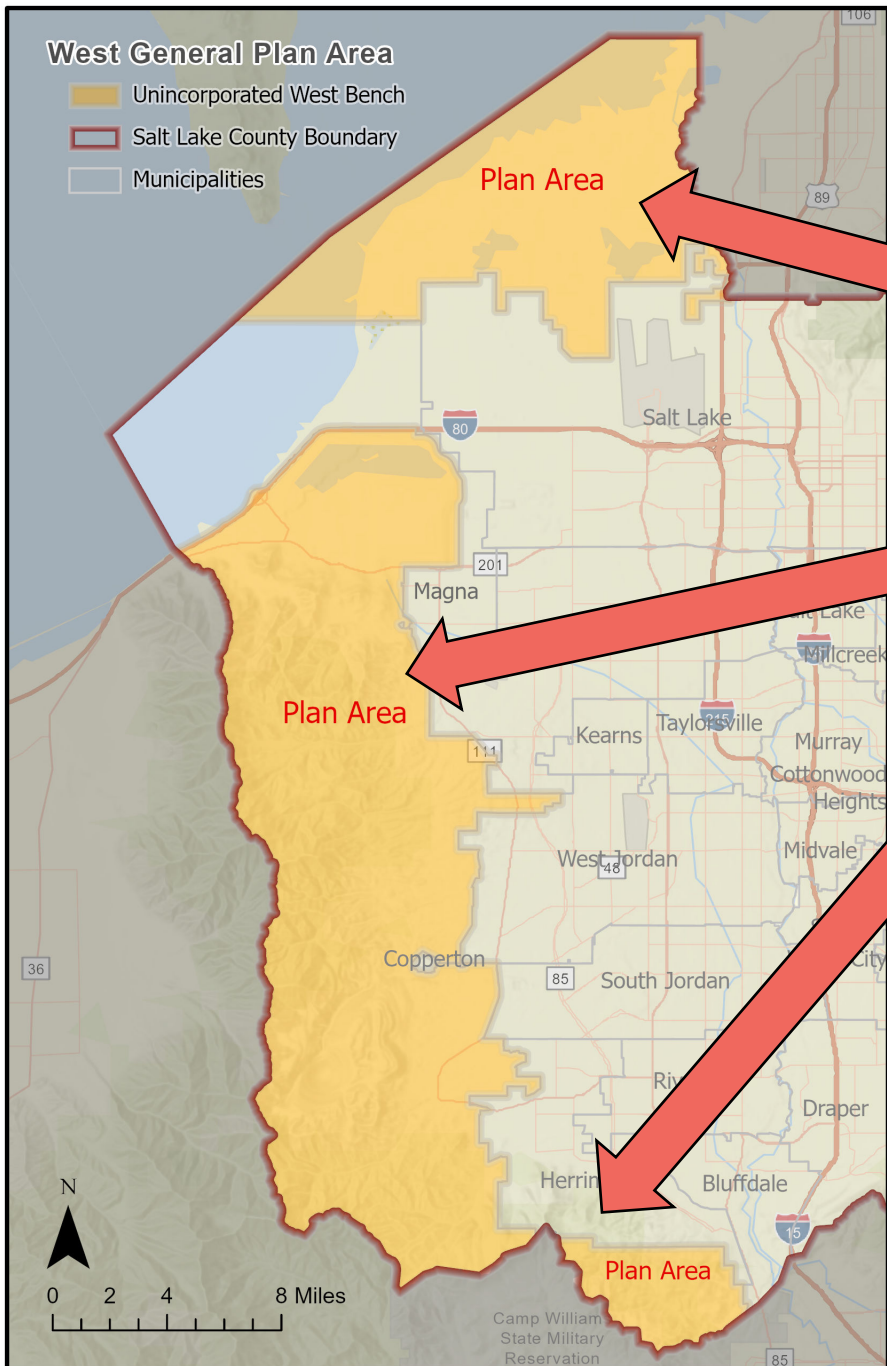
- **A long range or comprehensive plan for Counties**
- **General Plans are general in nature and not detailed master plans**
- **Typically, General Plans consider a 15–20-year planning horizon, but this plan goes even a little farther into the future.**
- **General Plans are required by Utah State code (17-27a-403)**

Planning to Implementation Process



What is included in a General Plan?

- **Required elements - Land use, Transportation, and Housing**
- **The West General Plan will also include Environment & Conservation, Recreation, Economy, Utilities & Public Safety**



Major Areas of the Plan

Shoreline Heritage

North & Central Oquirrh

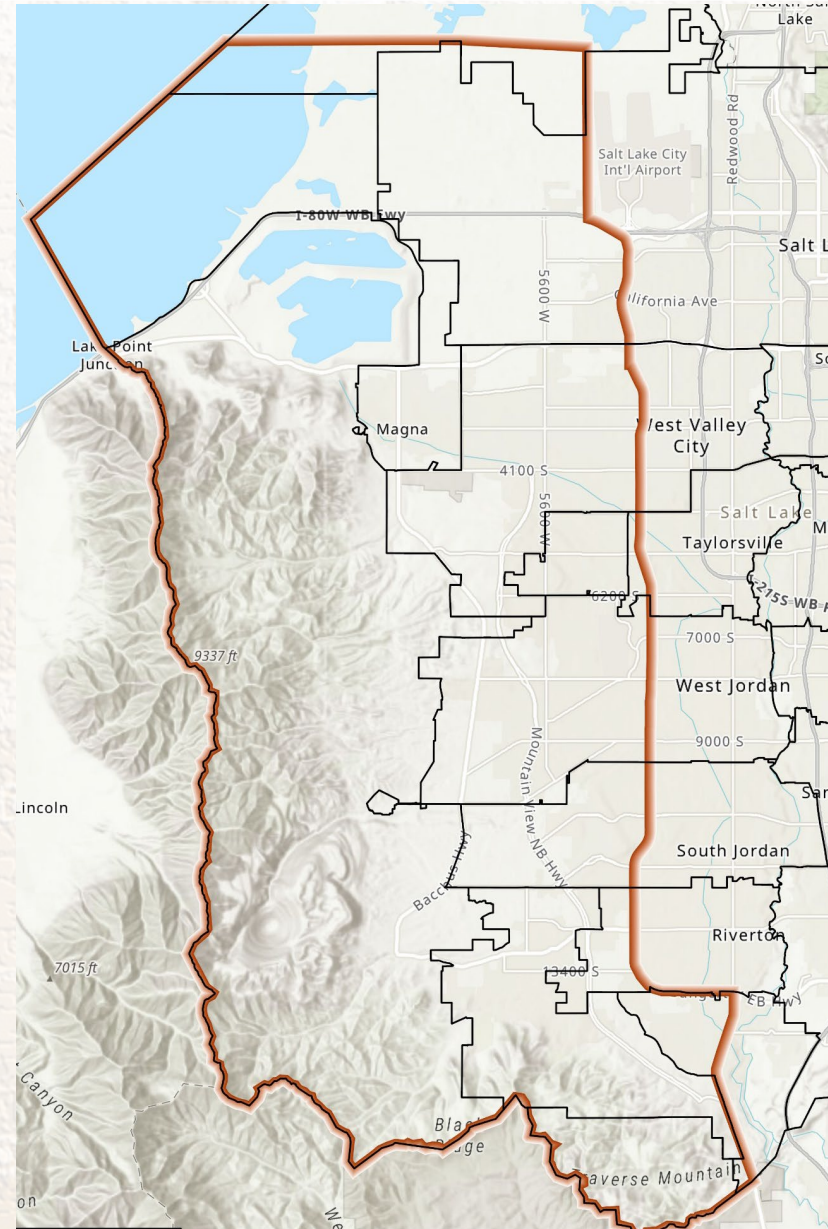
SW Oquirrh & Traverse Mountains

What has happened so far?

Oquirrh View Existing Conditions Report

Two Year Regional Study
2018/19 – 173 pgs.,
Bangerter to top of
Oquirrhs

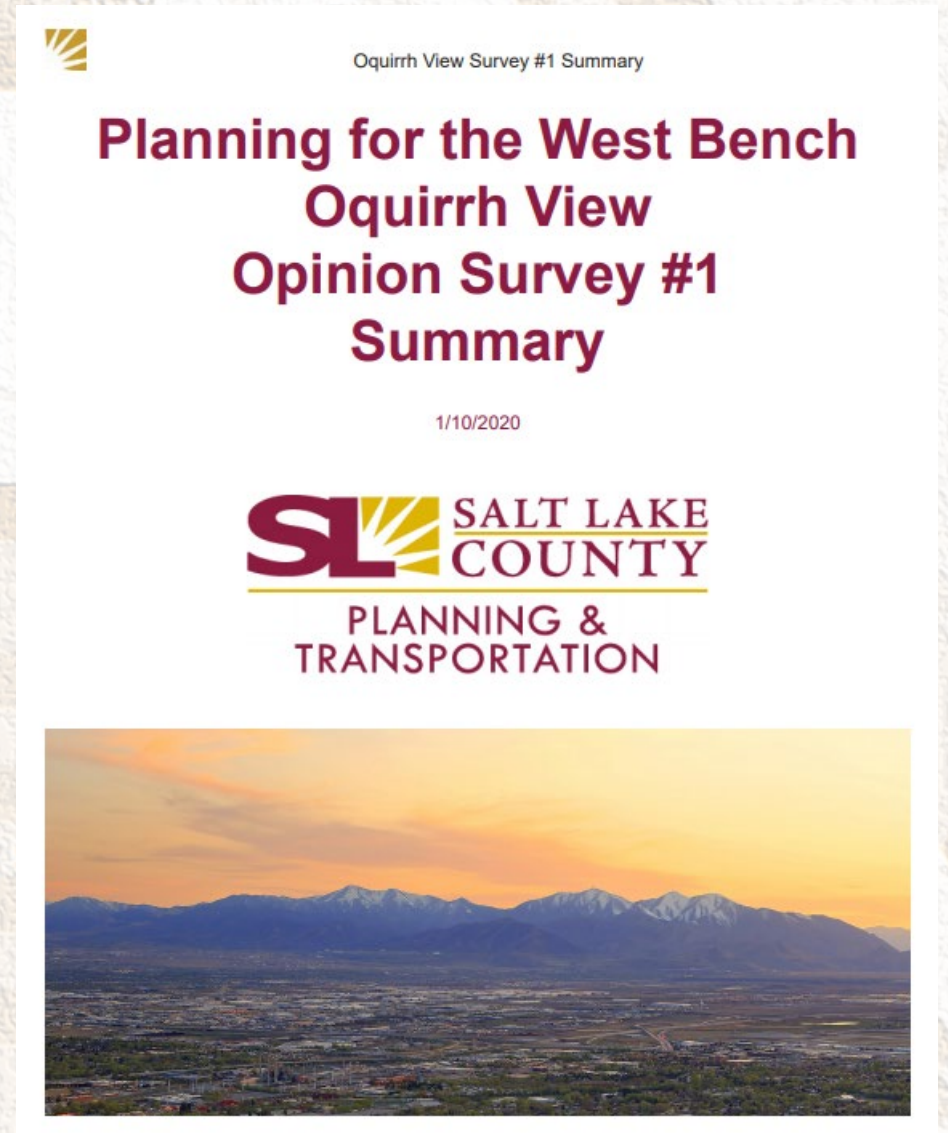
OquirrhView.org



What has happened so far?

Public Survey # 1 Conducted fall 2019

- **Topics:**
- **Issues of Concern**
- **Recreation**
- **Land Use**
- **Transportation**
- **Housing**
- **2,534 completed surveys**



Groundwork:

- **Cities**
- **Stakeholders**
- **Landowners and managers**
- **Audubon/ Rio Tinto ISSR**
- **Rio Tinto Oquirrhs**
- **Camp Williams**
- **SLCo Yellow Fork/Rose**
- **others 2018-present**



What has happened so far?

- **Monthly Planning Commission review**
- **Regular Steering Committee review**
- **Meetings with stakeholders and elected officials**
- **Public surveys and meetings**

Draft Vision Statements (summary)

LAND USE



Preserve open spaces, plan cohesive communities and commercial developments built around centers.

HOUSING



Housing affordability throughout communities while harmonizing housing design with the natural environment.

TRANSPORTATION



Provide access to affordable and convenient transportation systems.

ENVIRONMENT &
CONSERVATION



Preserve natural environments for public recreation and ecosystem benefits.

RECREATION



Connect communities with diverse recreational facilities that are available in all seasons.

ECONOMY



Develop diverse employment opportunities located in proximity to housing and transportation nodes on the west side.

UTILITIES &
PUBLIC SAFETY



Build reliable, cost-effective, and environmentally sustainable services.

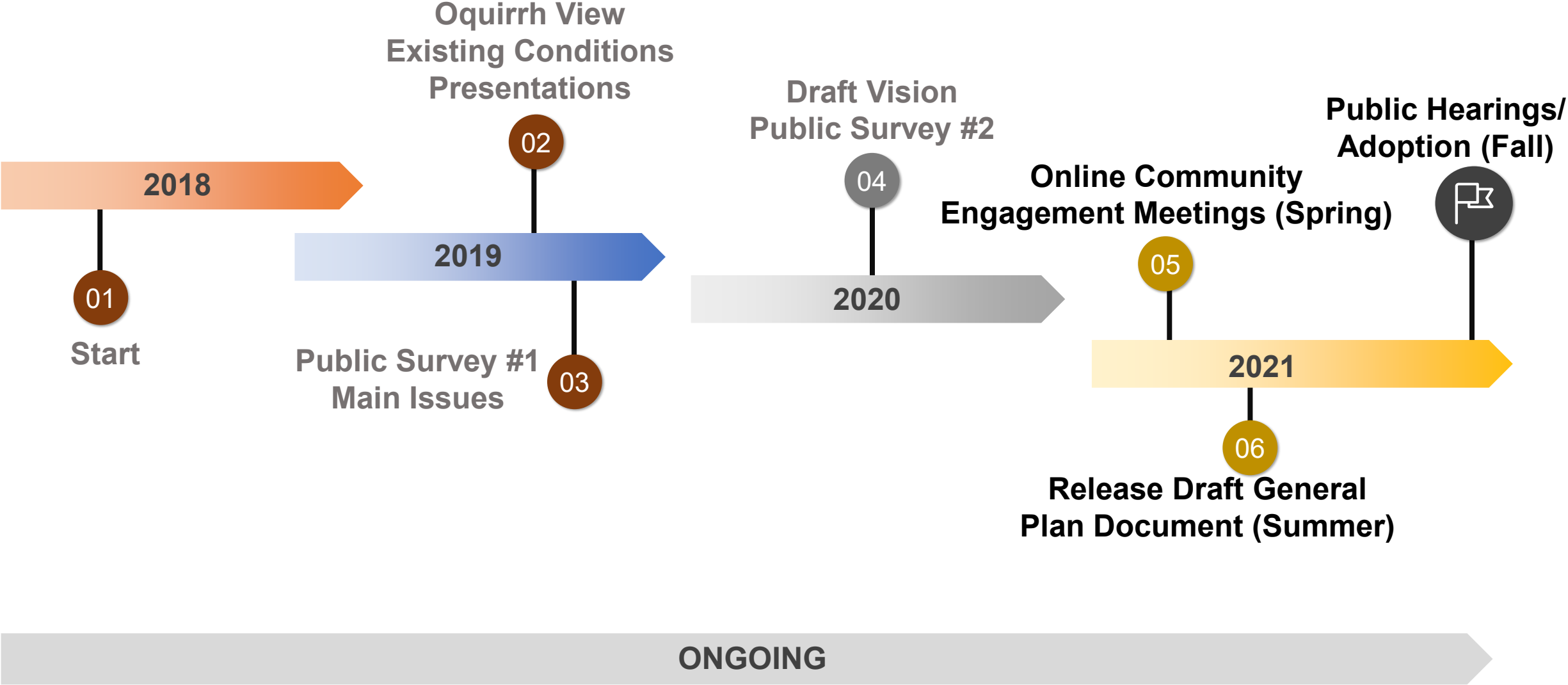
What has happened so far?

Public [Survey](#) #2 Draft Vision Aug-Sept 2020



- **2066 Total Responses (Spanish & English)**
- **3,876 comments**
- Please review the survey if you have not

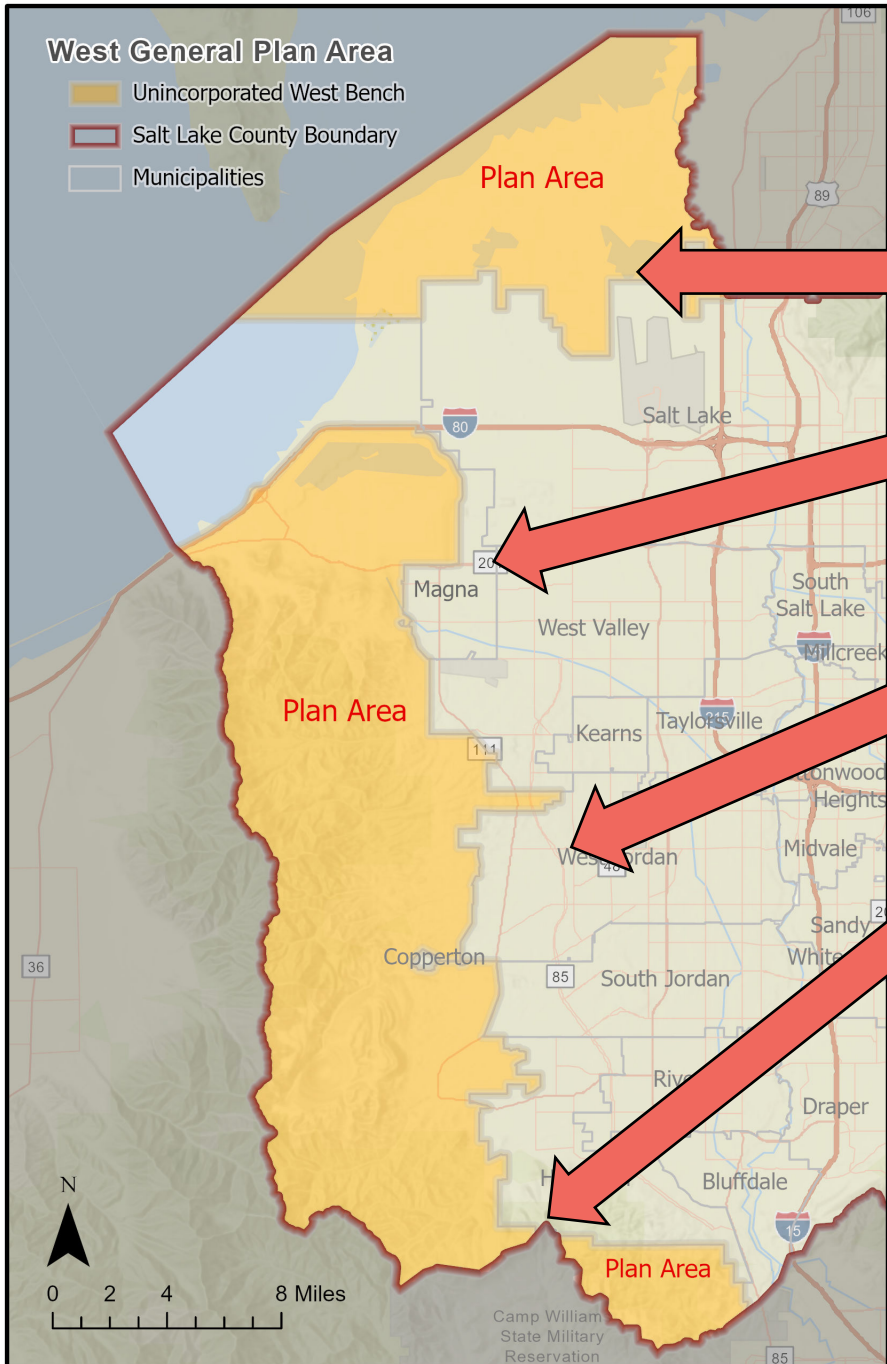
Plan Timeline



RESEARCH – LISTENING – REACHING OUT

– INVOLVING (PLANNING COMMISSION, STAKEHOLDERS, STEERING COMMITTEE, COUNTY COUNCIL, PUBLIC)

Online Community Engagement Meetings



1) Shoreline (SLC, Magna) – Mar. 15
79 registered, 46 attended

2) North Oquirrhrs (Magna, WVC, Kearns) – Mar. 18
54 registered, 22 attended

3) Central Oquirrhrs (WJ, SJ, Herriman) - Mar. 17
123 registered, 59 attended

4) SW Oquirrhrs/Traverse Mountains (Herriman, Riverton, Bluffdale, Camp Williams) – Mar. 22
83 registered, 39 attended

Total Meeting – 339 registered, 166 attended

Online Community Engagement Meetings

Promotion of the meetings through:

- Worked with Public Information Officers from all west side cities/townships
- 2 different news coverage
- Created and shared 44 separate social media posts
- 4,350 emails to residents (37.65% open rate)
- All 4 meetings' recordings have been uploaded to our YouTube Channel

57+ Questions were asked including such topics as:

- Wildlife
- Trails
- Open space
- Annexation
- Buffering Camp Williams
- Roads and Transportation
- Water
- others

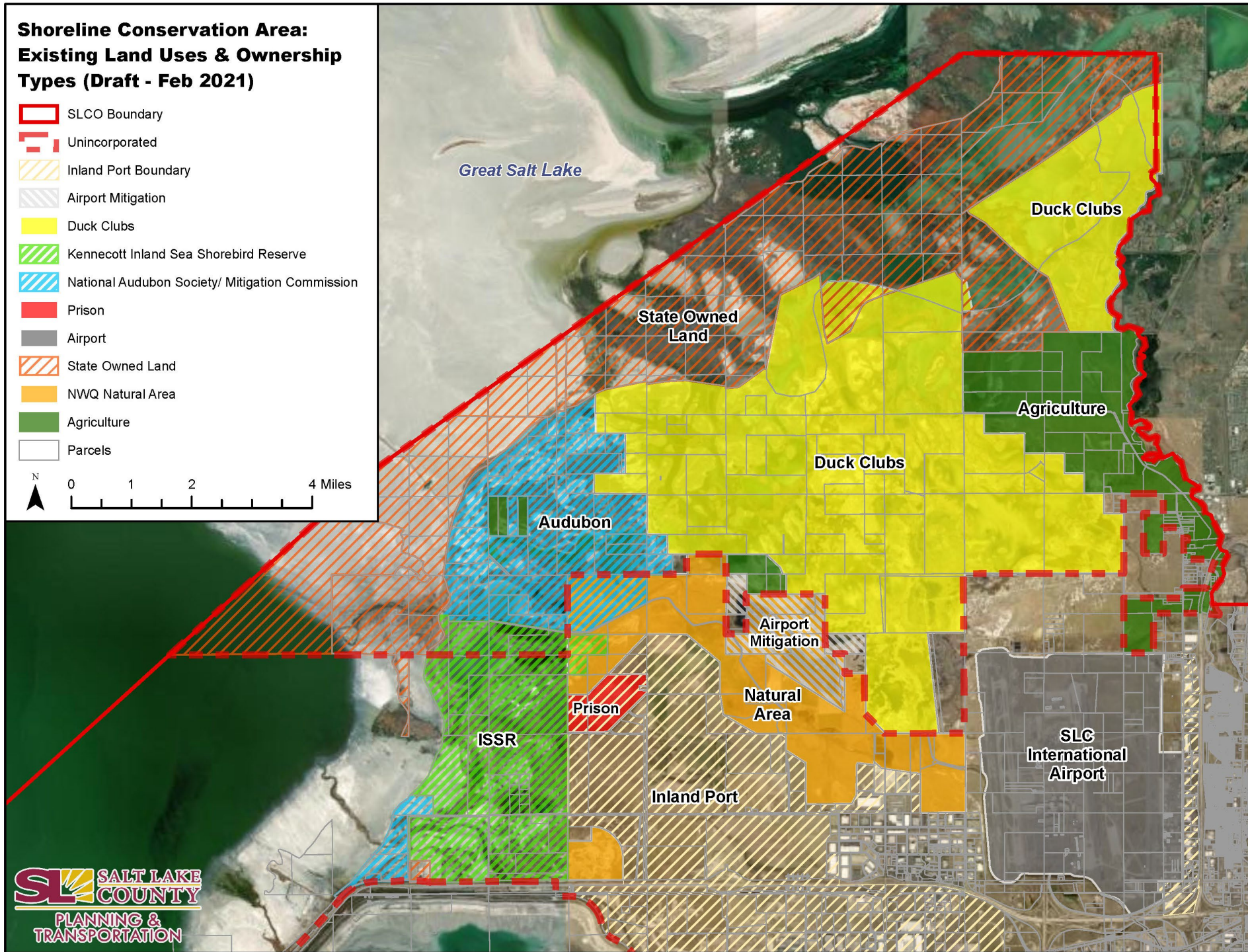
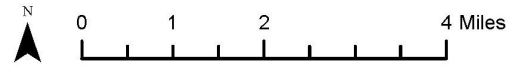
Shoreline Area



Photo Credit – Evan Barrientos Audubon

**Shoreline Conservation Area:
Existing Land Uses & Ownership
Types (Draft - Feb 2021)**

-  SLCO Boundary
-  Unincorporated
-  Inland Port Boundary
-  Airport Mitigation
-  Duck Clubs
-  Kennecott Inland Sea Shorebird Reserve
-  National Audubon Society/ Mitigation Commission
-  Prison
-  Airport
-  State Owned Land
-  NWQ Natural Area
-  Agriculture
-  Parcels



Shoreline Area Issues and concerns

- **Preserved areas are private properties (will continue)**
- **Potential effects from a hotter and drier Utah climate**
- **Great Salt Lake shrinking over time**
- **Potential road expansions**
- **Potential utility corridor expansions**
- **Potential use of agriculture lands for development**
- **Conflicting uses between bird habitats and adjacent land uses and recent or potential changes**
- **Illegal dumping**
- **Invasive species**
- **Stormwater management**
- **Lighting from adjacent operations affecting bird species**

Photo Credit – Evan Barrientos Audubon

Shoreline Area Opportunities

- **Additional opportunities to further preserve land and habitat**
 - **Creation of buffers between uses and habitats**
- **Continue agricultural uses and farm preservation**
- **Potential public bird habitat and outreach educational center (Rio Tinto)**
- **Potential for partnerships to achieve common goals**

Photo Credit – Evan Barrientos Audubon

Shoreline Area – Potential General Plan Recommendations

- **Promote awareness of the shoreline area and the ecological contribution to the Great Salt Lake watershed and ecosystem**
- **Future land use and zoning changes focused on conservation**
- **More efforts on water conservation (for entire plan area)**
- **Ensure future transportation and utilities are compatible with conservation goals**
- **Explore and consider additional conservation tools**
- **Additional collaboration on removing invasive weeds**


Credit – Evan Barrientos Audubon

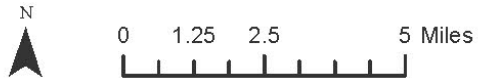
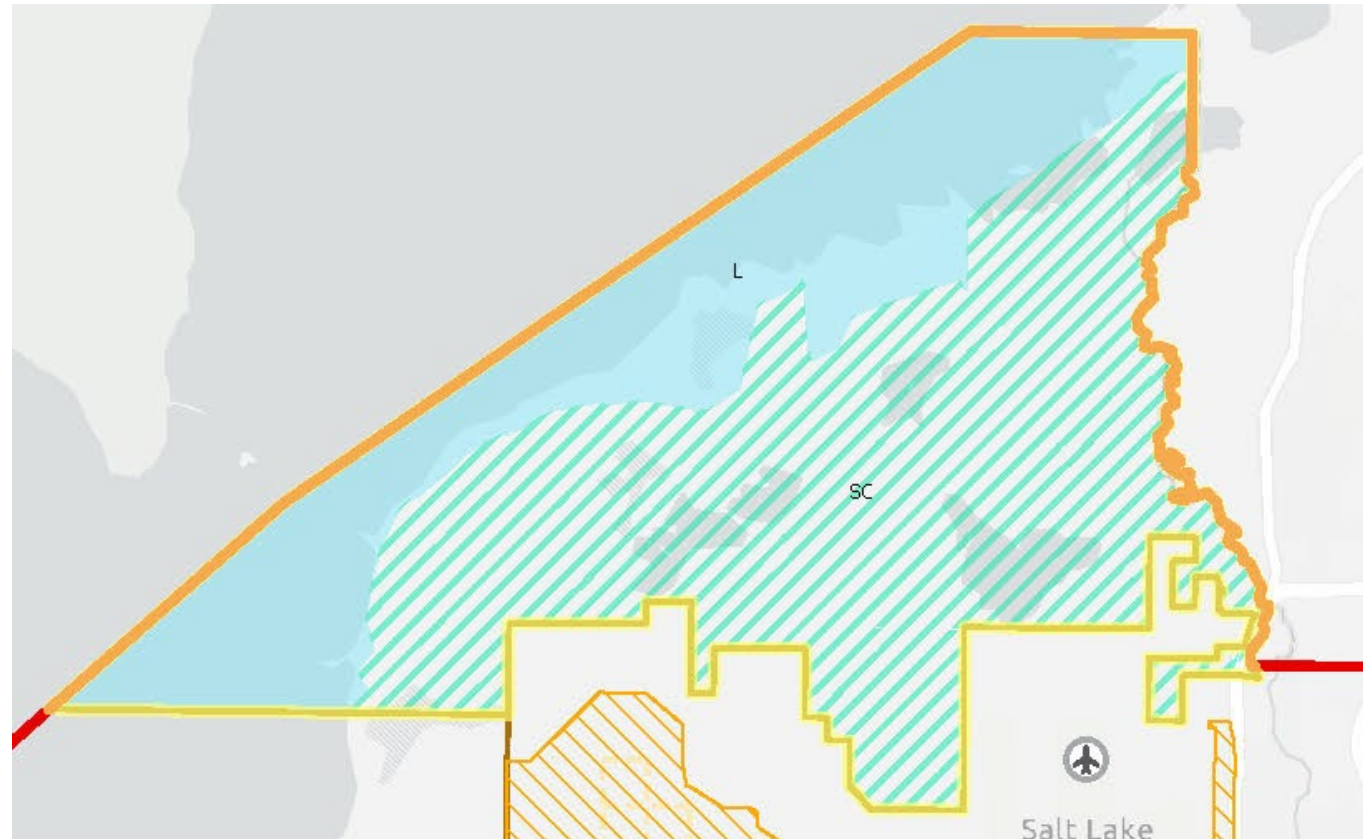
Draft Future Land Use Map

Future Land Uses (DRAFT - March 2021)

-  SLCO Boundary
-  Unincorporated Boundary
-  Municipalities
-  Limited Development Until Post-Mine Closure
-  Inland Port
-  RTP (2019-2050) New Roadway

Future Land Uses

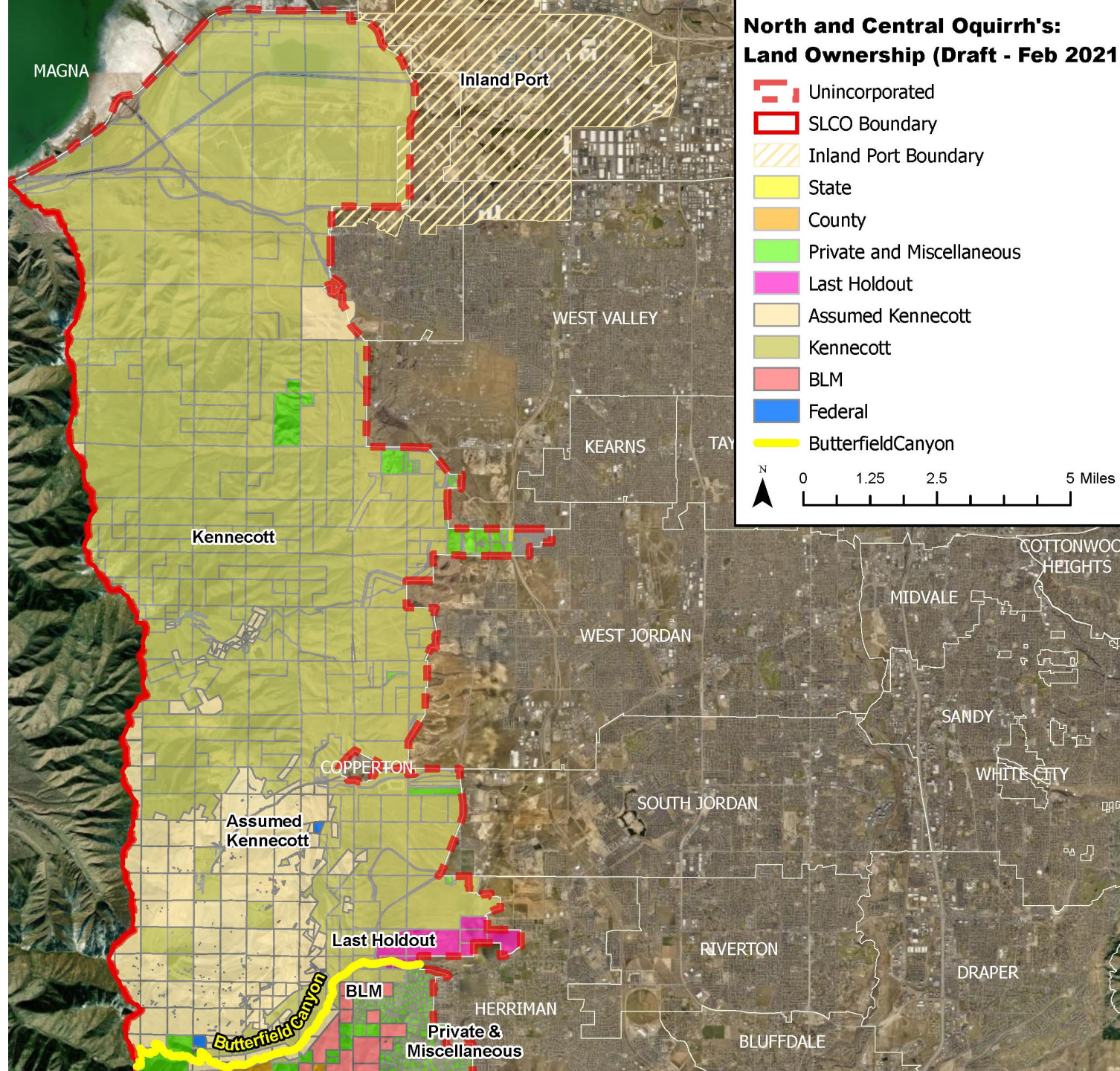
-  AG - Agriculture
-  C - Commercial
-  CN - Conservation (including rec. access)
-  I - Industrial
-  L - Lake
-  MPC - Master Planned Communities
-  ML - Military
-  MN - Reclaimed--Historic Mine
-  RC - Recreation
-  R - Residential
-  RR - Rural Residential
-  SC - Shoreline Conservation (AG & Habitat)



North/Central Oquirrh



North/ Central Oquirrh's



North/Central Oquirrhhs Issues and concerns

- **Post-mining impacts**
- **East-west traffic**
- **Need for additional transportation systems**
- **Need for more local jobs**
- **Water availability**
- **Utility infrastructure for fast growing areas**
- **Potential loss of habitat and forested areas in Oquirrhhs**
- **Land development and growing population near active mining areas**
- **Wildfire risks**
- **Housing affordability**
- **Air quality/sustainability**

North/Central Oquirrh Opportunities

- Time to plan/improve transit and transportation solutions
- Mining related uses:
 - Reclamation
 - Conservation of natural lands and habitats
 - Development of new recreational trails and parks
 - Potential for clean energy production (e.g. solar)
 - Potential for master planned communities with centers, jobs, housing and recreation/open space
- Potential Midas area could be developed near-to-mid term time frame (3500 acres)
- Coordination of master planned communities among multiple jurisdictions
- West Bonneville Shoreline Trail

North/Central Oquirrh Potential General Plan Recommendations

- **Establish a regional land conservation plan and process**
- **County to collaborate with other jurisdictions in negotiating with Rio Tinto for land conservation and access to Oquirrh Mountains**
- **Continue mining reclamation process with Rio Tinto, County Health Department, State Department of Environmental Quality, Utah Division Oil Gas, Mining and Environmental Protection Agency**

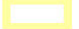



North/Central Oquirrh

Potential General Plan Recommendations



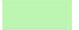

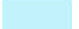
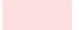






- **Potential future land uses: Conservation, Recreation, Master Planned Communities, Industrial, Commercial**
- **Update Master Planned Community process requiring detailed planning of utilities, transportation, housing, land conservation, development agreement requirements, jobs, zoning standards, centers, complete communities (housing, commercial, retail, civic, schools, institutional)**
- **Work with Rio Tinto to solidify agreements and alignments for future west Bonneville Shoreline Trail and associated trails**

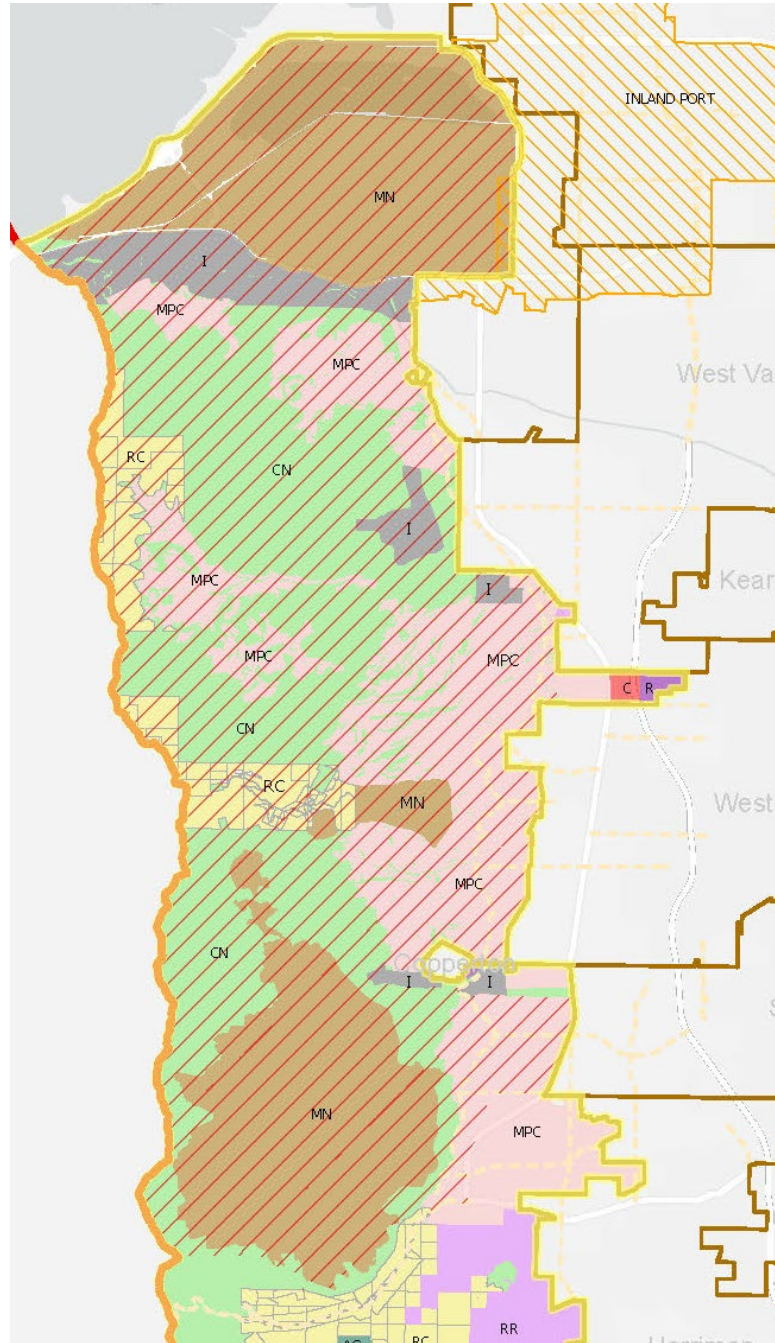
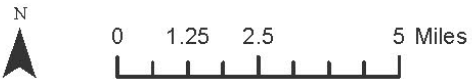
Draft Future Land Use Map

Future Land Uses
(DRAFT - March 2021)

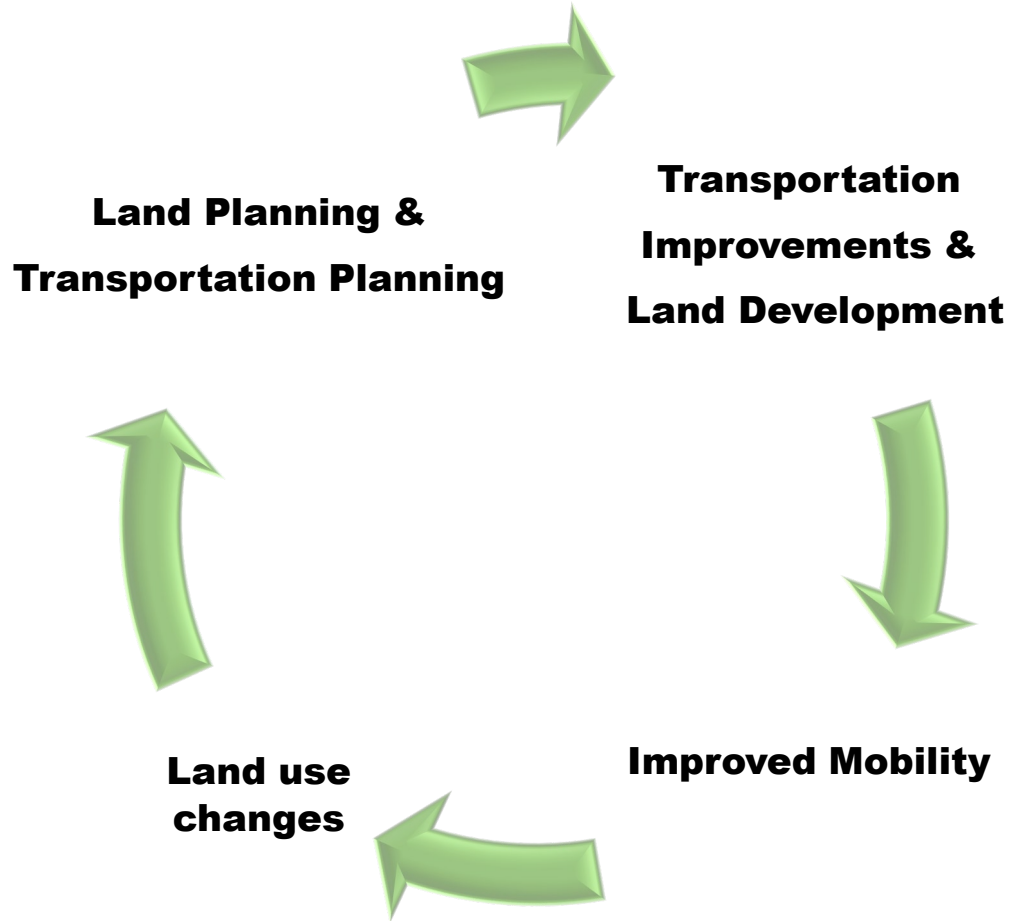
-  SLCO Boundary
-  Unincorporated Boundary
-  Municipalities
-  Limited Development Until Post-Mine Closure
-  Inland Port
-  RTP (2019-2050) New Roadway

Future Land Uses

-  AG - Agriculture
-  C - Commercial
-  CN - Conservation (including rec. access)
-  I - Industrial
-  L - Lake
-  MPC - Master Planned Communities
-  ML - Military
-  MN - Reclaimed--Historic Mine
-  RC - Recreation
-  R - Residential
-  RR - Rural Residential
-  SC - Shoreline Conservation (AG & Habitat)



Land Use & Transportation Relationship

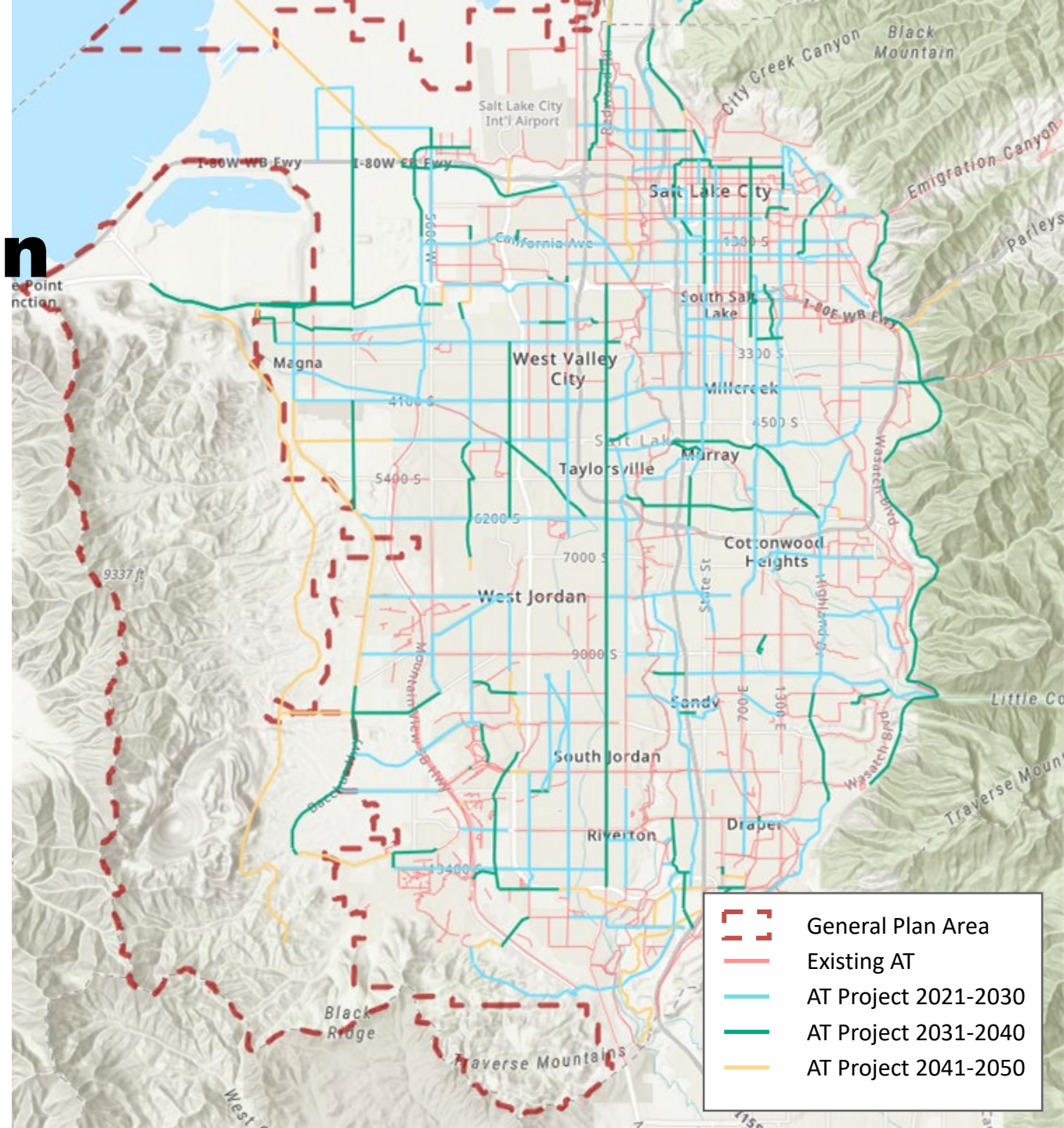


Regional Transportation Plan Active Transportation

Planned Projects

- Bonneville Shoreline Trail West
- SR-111 Shared Use Path
- Bacchus Highway Bike Lanes
- East/West Connections

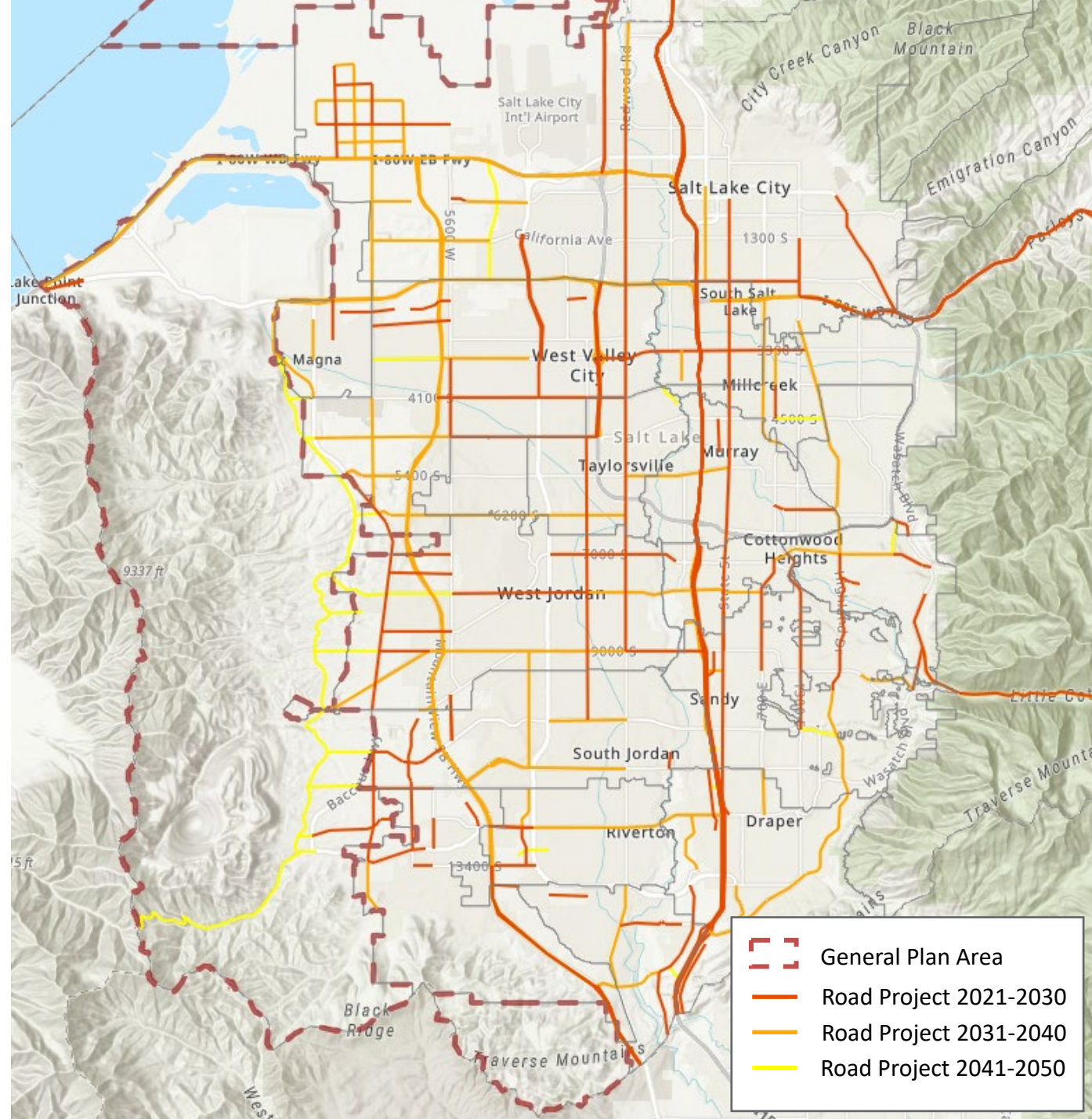
- SR 201
- 4100 South
- 4700 South
- 6200 South
- 7800 South
- 9000 South
- Old Bingham
- Highway
- South Jordan Parkway
- 11800 South
- Herriman Highway



Regional Transportation Plan Roads

Planned Projects

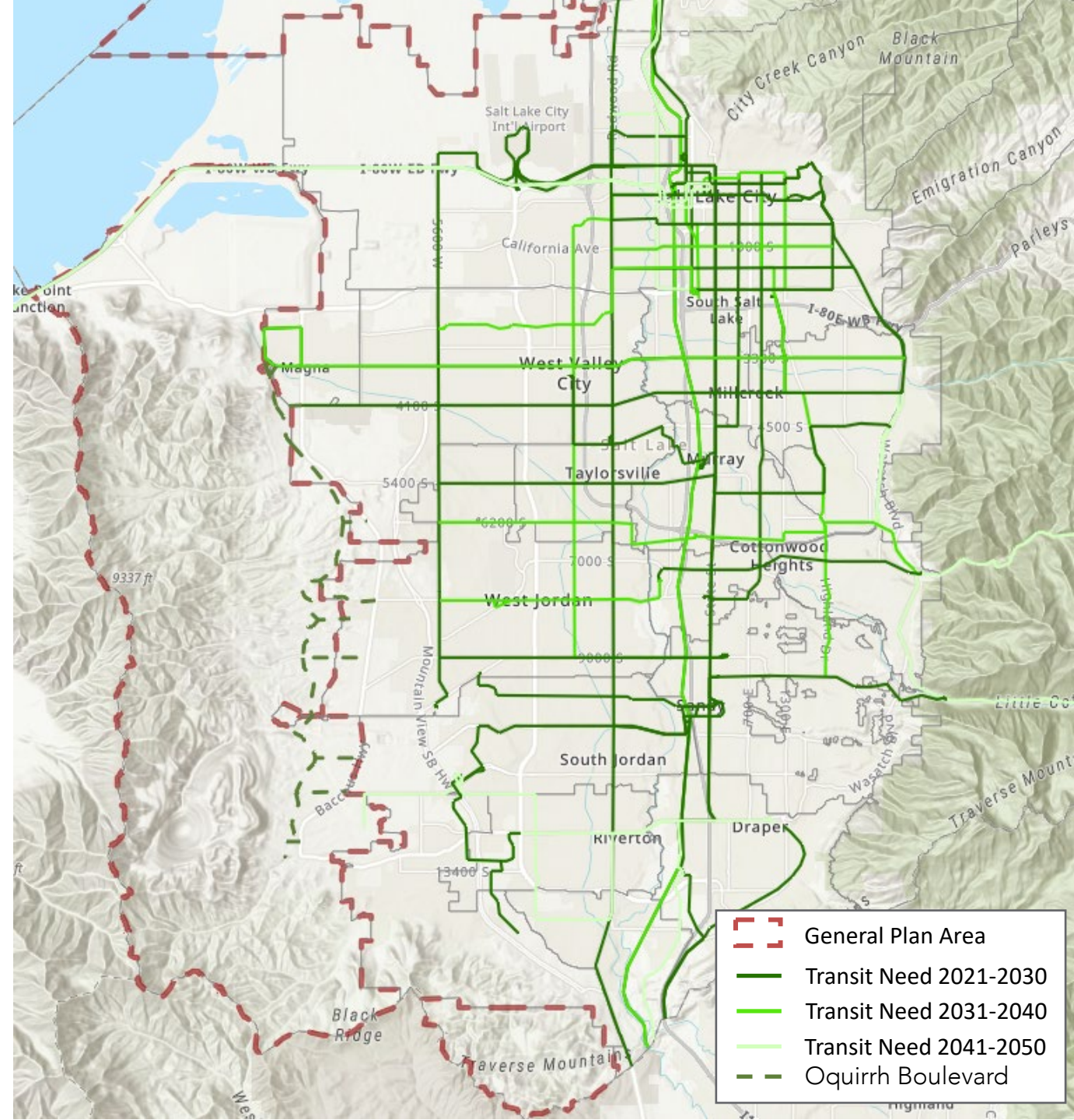
- Oquirrh Boulevard New Construction
- SR-111 Widening
- Herriman Parkway Extension
- Butterfield Canyon Road (Oquirrh Connection)
- East/West Connections
 - SR 201
 - 4100 South
 - 4700 South
 - 5400 South
 - 6200 South
 - 7000 South
 - 7400 South
 - 7800 South
 - 8600 South
 - 9000 South
 - New Bingham Highway
 - South Jordan Parkway
 - 11800 South
 - Herriman Highway



Regional Transportation Plan Transit

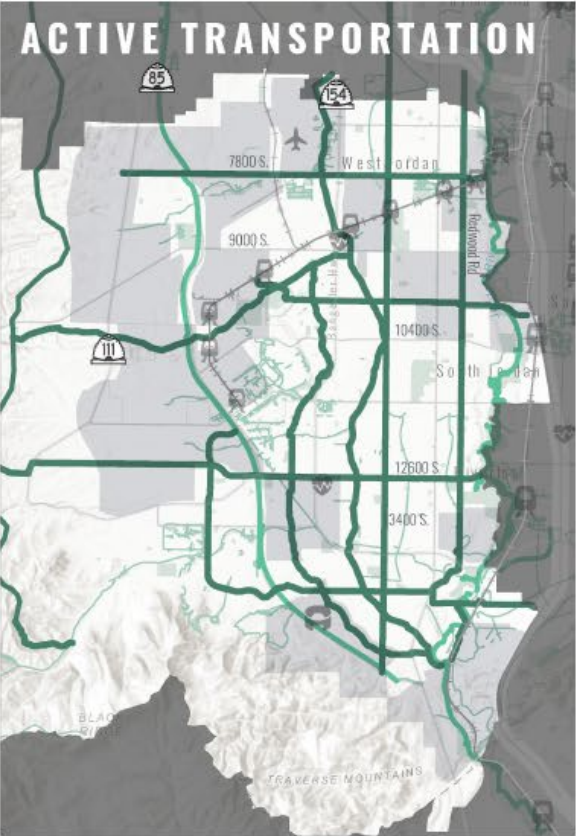
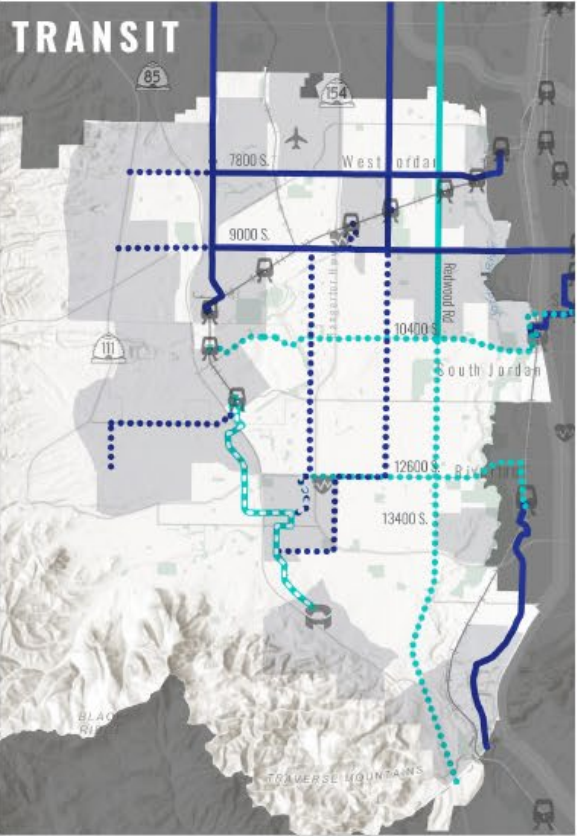
Planned Projects

- 3300 South / 3500 South Corridor - Core Route
- 3300 South / 3500 South Corridor - Bus Rapid Transit
- 3900 South / 4100 South Corridor - Core Service
- 11800 South to Olympia Hills – Core Service
- East/West Connections
 - 3500 South
 - 4100 South
 - 11800 South



Southwest SLCo Transportation Study

PREFERRED SCENARIO



*Local Service & Microtransit will be included to support core service

*Local Active Transportation facilities will be included to support the system



<https://wfr.org/studies/sw-slco-transportation-analysis-and-solutions-development/>

Regional Connectivity

AT Connections

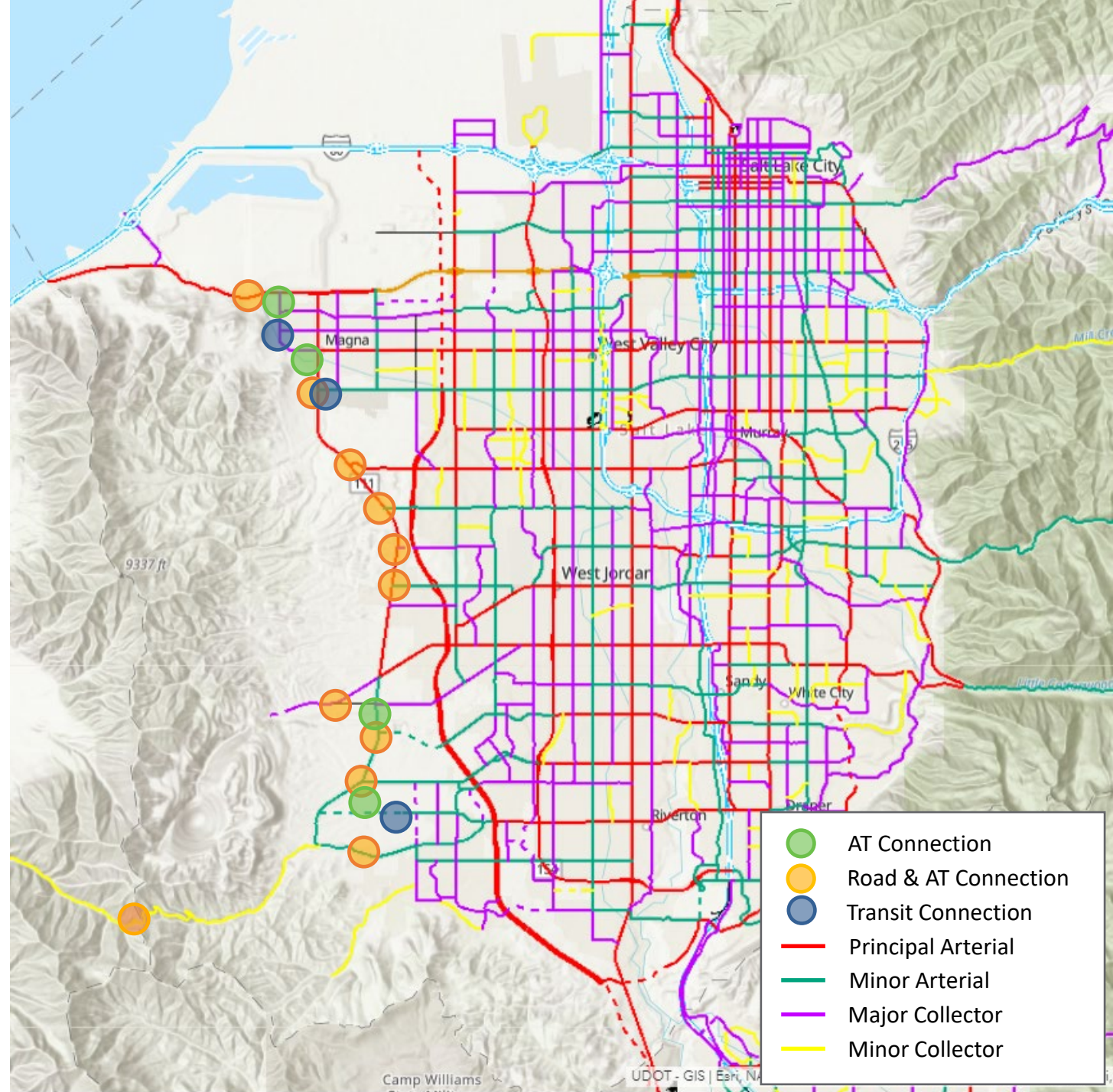
- Most bikeways/trails on regional roads
- Other Multi-use Trails
 - Decker Lake / Magna Trail
 - Bingham Creek Trail
 - Utah & Salt Lake Canal Trail
 - Midas Creek Trail

Transit Connections

- Limited to Magna and 11800 South

Road Connections

- Multiple corridors for east/west connections
- Most are to arterial roads (5/7 lanes)



Local Connectivity

Create a network of streets

Includes all users

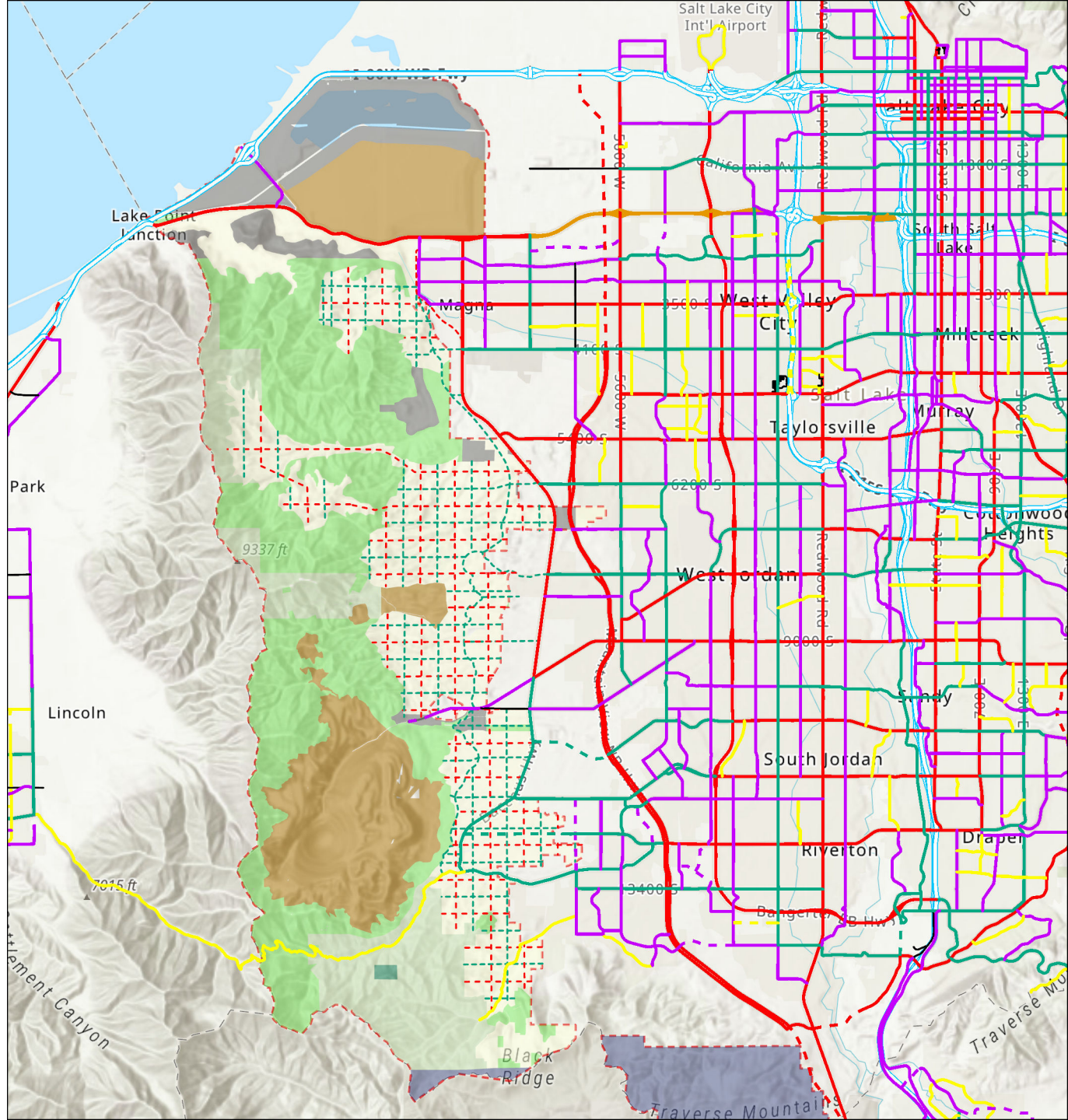
- Accommodates all modes

Build a human-scale network

- Dense network of streets and intersections
- Attractive and convenient to pedestrians

Align and connect all new streets

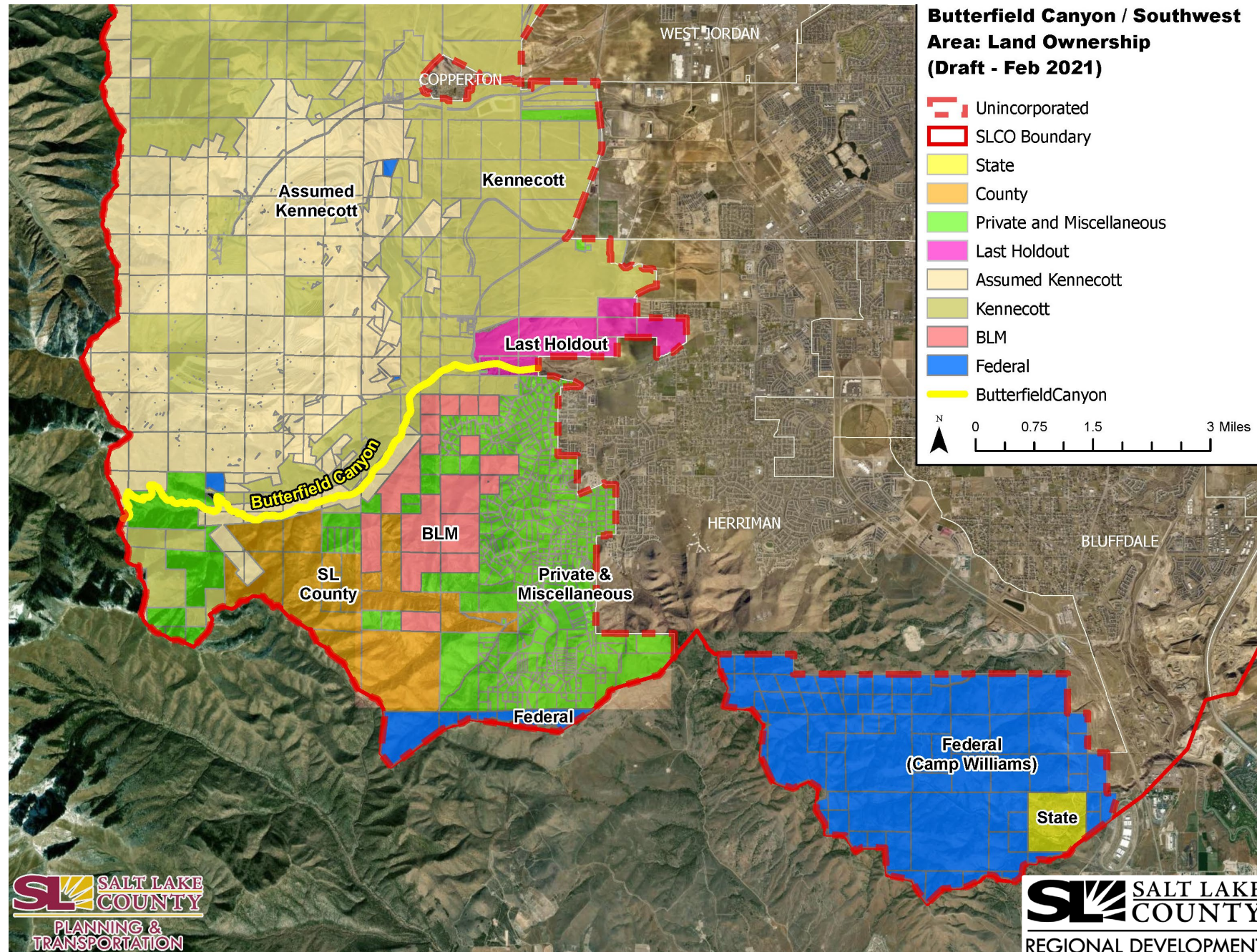
- Consider street connectivity ordinance



Southwest Oquirrhs & Traverse Mountains



Southwest Oquirrh & Traverse Mountains



Rose Canyon and Yellow Fork Canyon Master Plan



Composite Trails Map

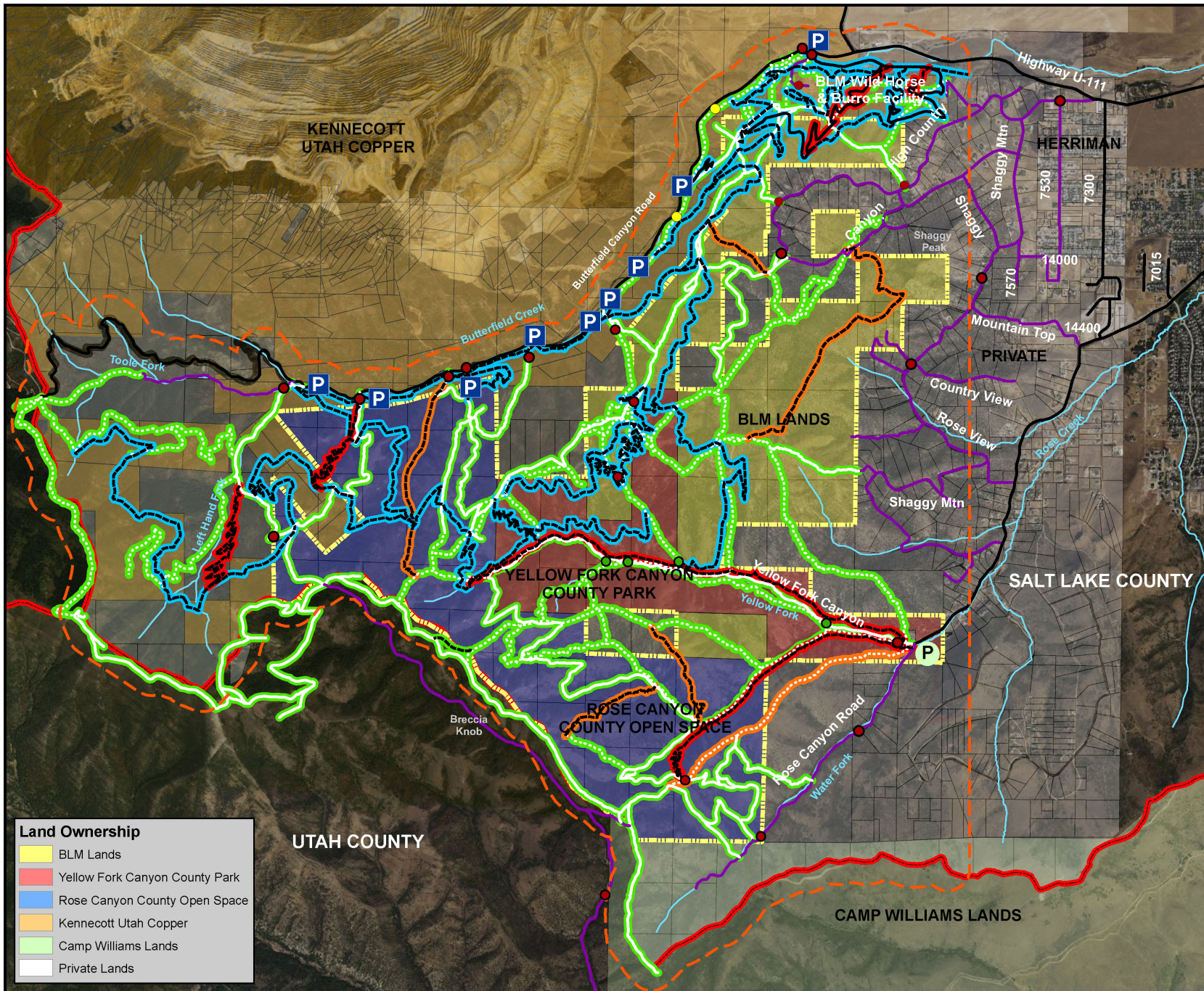
- Existing Picnic Area
- Existing Locked Gate
- Recently Created BMX Area*
- P Existing Undeveloped Parking Area
- P Existing Developed Parking Area
- Public Lands Boundary
- Salt Lake County Boundary
- Analysis Area Boundary (10,043 acres)
- Existing Streams
- Existing Public Road
- Existing Private Road
- Existing Primary Trail (173,043 lf. / 32.8 miles)
- - - Existing Secondary Trail (182,588 lf. / 34.6 miles)
- - - Proposed Trails (240,121 lf. / 45.5 miles)
- Mountain Bike Trails (165,059 lf. / 31.3 miles)
- Mountain Biking Downhill Only Trails (47,650 lf. / 9.0 miles)
- Hoof and Boot Trails (35,227 lf. / 6.7 miles)
- Multi-Use Trails (347,816 lf. / 65.9 miles)

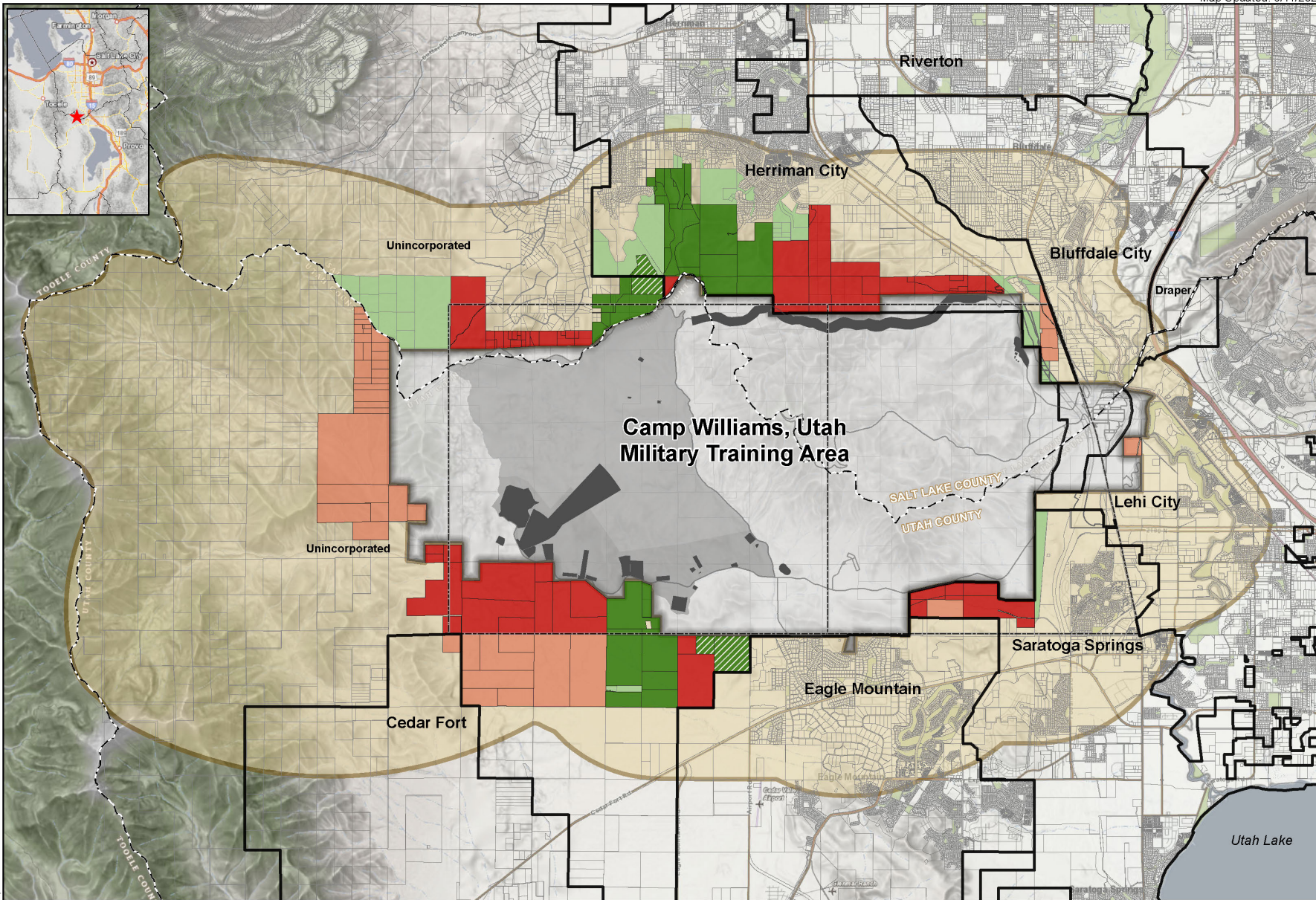
- Land Ownership**
- BLM Lands
 - Yellow Fork Canyon County Park
 - Rose Canyon County Open Space
 - Kennecott Utah Copper
 - Camp Williams Lands
 - Private Lands



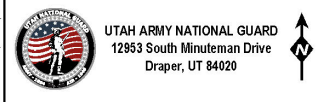
0 2,800 5,600 Feet

Projection: UTM, NAD 83, 12 North
Map Date: 10/1/2020





0 0.5 1 2 Miles
 WGS 1984 Web-Mercator Auxiliary Sphere | GCS WGS 1984 | Scale: 95,000



- ACUB Easement - Priority 1
- ACUB Easement - Priority 2
- ACUB Easement - Completed
- ACUB Easement - Under Contract
- Other Protected Open Space
- Sentinel Landscape (2mi)
- Live Fire Range
- Impact Area
- Special Use Airspace

WEST TRAVERSE SENTINEL LANDSCAPE

Figure 1

Southwest Oquirrhs & Traverse Mountains Issues & concerns

- **East-west traffic**
- **Need for additional transportation systems**
- **Need for more local jobs**
- **Water availability**
- **Utility infrastructure for fast growing areas**
- **Potential loss of habitat and forested areas in Oquirrhs**
- **Drought and wildfire risks**
- **Growing recreational demands for Butterfield Canyon & Yellow Fork/Rose Canyon**
 - **Road width, debris, graffiti, lack of cellular service, lack of amenities**
 - **Needed additional maintenance for trails and roads**
 - **Multiple landowners**
- **Camp Williams**
 - **Incompatible adjacent development, trespassing, wildfire risks, and poaching**

Southwest Oquirrhhs & Traverse Mountains Opportunities

- **Butterfield, Yellow Fork and Rose Canyon could become a major outdoor recreation destination (comparable to Mill Creek or Corner Canyon)**
 - **Trails (hiking, running, mt. biking, and equestrian)**
 - **Landowners working together SLCo, BLM, Rio Tinto, Camp Williams, Herriman and others**
- **Camp Williams**
 - **Working to acquire lands for a 1/2 – 1 mile buffer around military base**
 - **Buffer would be used to reduce wildfire risk, habitat preservation, outdoor recreation (trails)**

Southwest Oquirrhhs & Traverse Mountains Potential General Plan Recommendations

- **Potential future land uses: Recreation, Conservation, Rural Residential, and Military**
- **SLCo to plan for Butterfield, Yellow Fork and Rose Canyons**
 - **Trails Master Plan in progress (hiking, running, mt. biking, and equestrian)**
 - **Butterfield Canyon road and recreation corridor planning with landowners and partners**
 - **Plan to finance improvements**
 - **Landowner collaboration (SLCo, BLM, Rio Tinto, Camp Williams, Herriman and others)**

Southwest Oquirrhrs & Traverse Mountains Potential General Plan Recommendations



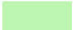








- **Acknowledge and support continued operations of Camp Williams for training of armed forces, National guard and police**
- **Support Camp Williams with buffer lands, preservation of open space and outdoor recreation planning**
- **Work with Camp Williams to connect future preservation areas with the County's Yellow Fork and Rose Canyon trail system**
- **High Country Estates to continue as rural residential**

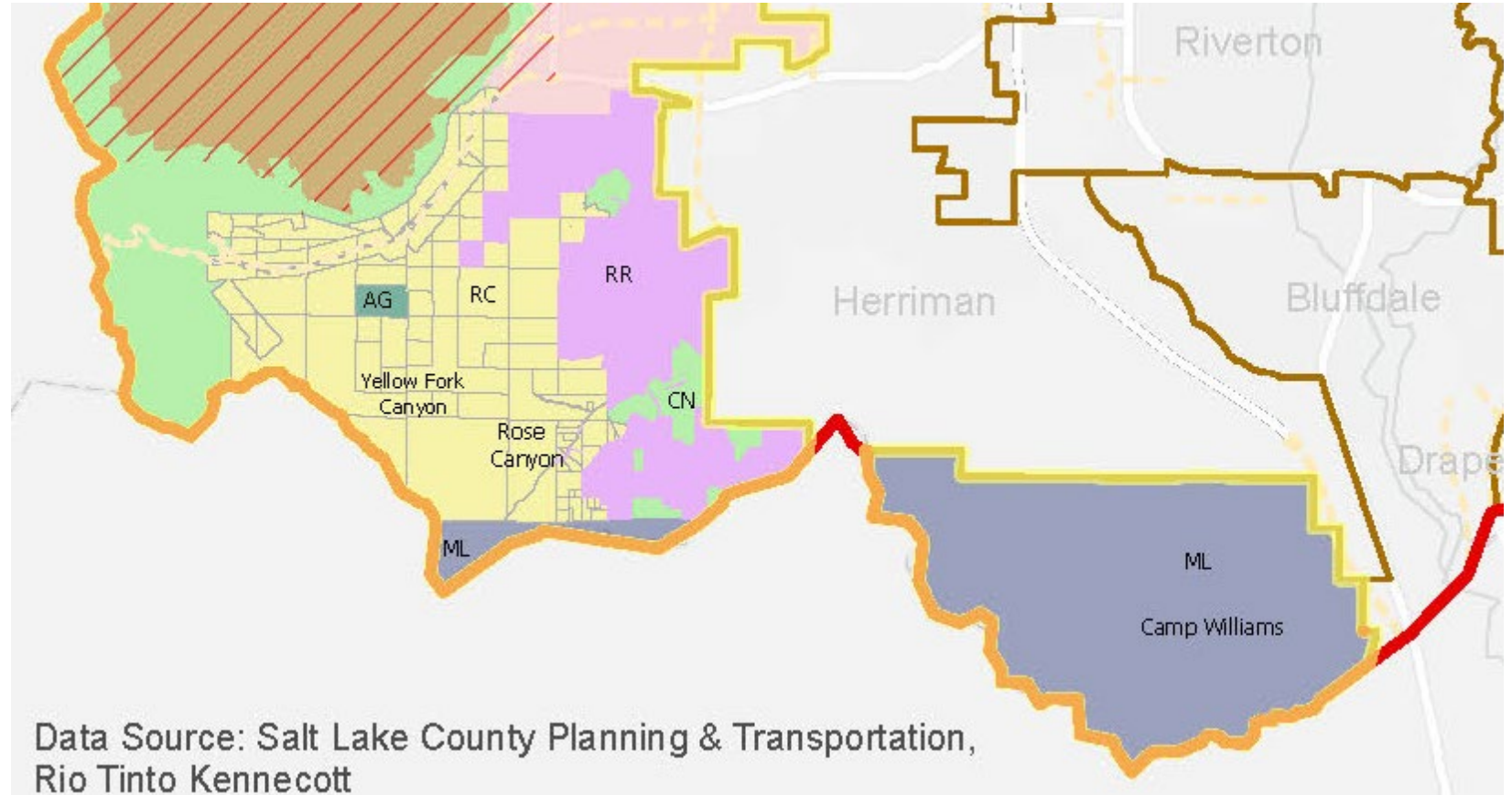
Draft Future Land Use Map

Future Land Uses
(DRAFT - March 2021)

-  SLCO Boundary
-  Unincorporated Boundary
-  Municipalities
-  Limited Development Until Post-Mine Closure
-  Inland Port
-  RTP (2019-2050) New Roadway

Future Land Uses

-  AG - Agriculture
-  C - Commercial
-  CN - Conservation (including rec. access)
-  I - Industrial
-  L - Lake
-  MPC - Master Planned Communities
-  ML - Military
-  MN - Reclaimed--Historic Mine
-  RC - Recreation
-  R - Residential
-  RR - Rural Residential
-  SC - Shoreline Conservation (AG & Habitat)



Data Source: Salt Lake County Planning & Transportation,
Rio Tinto Kennecott





Questions & Discussion



**Thank you for participating
for more information visit
<https://slco.org/west-plan/>**